
DAY 2 TV & FILM

- WE'RE GOING TO LOOK AT DRAMA AND DOCUMENTARY TODAY.
- WHAT IS THE DIFFERENCE BETWEEN A DRAMA AND A DOCUMENTARY?
- PITCHING

DOCUMENTARY

- A DOCUMENTARY IS A TELEVISION OR RADIO PROGRAMME, OR A FILM, WHICH SHOWS REAL EVENTS OR PROVIDES INFORMATION ABOUT A PARTICULAR SUBJECT.

DRAMA

- A DRAMA FILM/TV PROGRAMME IS A SERIOUS PRESENTATION OR STORY WITH SETTINGS OR LIFE SITUATIONS THAT PORTRAY REALISTIC CHARACTERS IN CONFLICT WITH EITHER THEMSELVES, OTHERS, OR FORCES OF NATURE. A DRAMATIC FILM SHOWS US HUMAN BEINGS AT THEIR BEST, THEIR WORST, AND EVERYTHING IN-BETWEEN. EACH OF THE TYPES OF SUBJECT-MATTER THEMES HAVE VARIOUS KINDS OF DRAMATIC PLOTS. THERE ARE SUB-GENRES OF DRAMA:
- CRIME DRAMA
- COURTROOM
- HISTORICAL
- DRAMEDY (COMEDY AND DRAMA)
- PERIOD DRAMA

DRAMAS & DOCUMENTARY
YOU HAVE WATCHED AND
ENJOYED.



WWW.BSLZONE.CO.UK

DOCUMENTARY & DRAMA

- HOW DO DOCUMENTARIES PRESENT THE TRUTH?
- HOW DO DRAMAS APPEAR REALISTIC?
- DRAMA CAN APPEAR REALISTIC BY USING BELIEVABLE DIALOGUE, CHARACTERS, USE RULES OF THE WORLD (SOCIAL CONVENTIONS) THAT YOU CAN DISRUPT/DISTURB TO CREATE THE DRAMA.
- DOCUMENTARIES ARE CREATED TO INFORM AND GIVE A DEEPER UNDERSTANDING OF A SUBJECT. TO SUPPORT YOUR DOCUMENTARIES FINDING THERE MUST BE THOROUGH RESEARCH AND STATISTICS – FACTS. THIS MAKES YOUR DOCUMENTARY STRONGER AND HAVE A TRUTH. IT MAY NOT BE THE ONLY TRUTH, BUT IT WILL BE BASED ON SOUND RESEARCH.
- DRAMA IS CREATED TO ENTERTAIN. DOCUMENTARIES ARE CREATED TO INFORM. BOTH TYPES OF FILM GO THROUGH SIMILAR PROCESSES: PRE-PRODUCTION, PRODUCTION AND POST-PRODUCTION BUT THERE ARE CERTAIN ELEMENTS WHICH DIFFERENTIATE THE GENRES.

DOCUMENTARY

- SUBJECT MATTER
- FACTS
- EDITING RESEARCH
- STRUCTURE
- INTERVIEWS
- LOCATION SHOTS
- NARRATION
- EDITING
- SOUND
- MUSIC
- VOICE OVER

DRAMA

- RESEARCH ON CHARACTERS, STORYLINE, PLOT – USE FACT FOR YOUR FICTION TO MAKE IT BELIEVABLE
- CREATE A WORLD
- STRUCTURE THE STORY
- USE OF CHARACTERS
- THEMES AND SUBTEXTS
- PLOT POINTS
- PERSPECTIVE
- DRAMATIZATION

SIGNMEDIA SMART

- NOW LET'S LOOK AT PRE-PRODUCTION, PRODUCTION AND POST-PRODUCTION. IF YOU'RE NOT SURE ABOUT SOMETHING, ASK ME BUT ALSO HAVE A LOOK AT:
- [HTTP://WWW.SIGNMEDIASMART.COM](http://www.signmediasmart.com)

DEVELOPMENT



DEVELOPMENT

- WHERE IDEA FROM?
- BOOK
- PLAY
- ANOTHER FILM
- TRUE STORY
- VIDEOGAME
- COMIC BOOK
- GRAPHIC NOVEL
- ORIGINAL IDEA

DEVELOPMENT

- SYNOPSIS
- STEP OUTLINE
- TREATMENT
- PITCHING
- SCRIPT

DEVELOPMENT

- SO, MAKING FILMS/TV, ANIMATION IS A BUSINESS! LEGAL CONTRACTS ARE REQUIRED, AND A LOT OF DEVELOPMENT HAPPENS EVEN BEFORE YOU GET TO PRE-PRODUCTION.

DEVELOPMENT

- I THINK WE SHOULD START DEVELOPING A PROJECT TO FILM THIS WEEK. SO, YOU'RE GOING TO NEED TO THINK WHAT YOU CAN FILM AND EDIT IN A SHORT SPACE OF TIME – **APPROXIMATELY 10 SHOTS**. YOU'LL FILM USING EITHER: IPADS/IPHONES, WE HAVE X NUMBER OF CAMERA AND YOU'LL NEED TO BE ABLE TO EDIT THIS FOOTAGE. IT CAN BE A DOCUMENTARY OR A DRAMA OR A STOP-MOTION FILM, BUT YOU MUST BE ABLE TO FILM IT WITHOUT NEEDING MONEY FOR PROPS, WARDROBE OR MAKE UP OR SFX.
- WE'LL DO THIS IN GROUPS.

PRE-PRODUCTION

- SCRIPT BREAKDOWN
- STORYBOARD
- SCHEDULE YOUR SHOOT
- CAST/AUDITIONS
- LOCATION SCOUTING
- ASSEMBLE THE CREW
- ART DEPARTMENT
- ETC

CODE – BREAKDOWN SHEETS/STRIPS

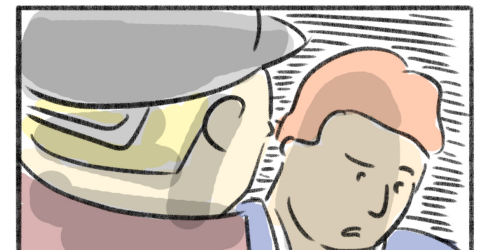
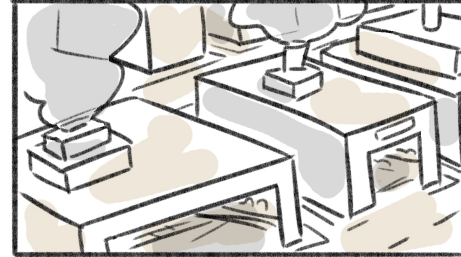
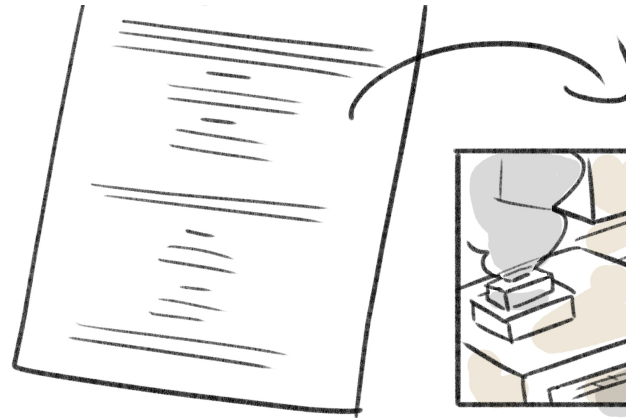
Day Ext. – Yellow
Night Ext. – Green
Day Int. – White
Night Int. – Blue
Numbers refer to budget categories

SCRIPT BREAKDOWN SHEET

1 2 DATE

3 PRODUCTION COMPANY	4 PRODUCTION TITLE/NO.	5 BREAKDOWN PAGE NO.
6 SCENE NO.	7 SCENE NAME	8 INT. OR EXT.
9 DESCRIPTION	10 DAY OR NIGHT	11 PAGE COUNT

CAST Red (1301-2-3) 12	STUNTS Orange (1304-5) 13	EXTRAS/ATMOSPHERE Green (2120) 14
	EXTRAS/SILENT BITS Yellow (2120) 15	SECURITY/TEACHERS 18
SPECIAL EFFECTS Blue (2700) 17	PROPS Violet (2500) 18	VEHICLES/ANIMALS Pink (2600/4500) 19
WARDROBE Circle (3400) 20	EST. NO. OF SETUPS 21	EST. PROD. TIME 22
SPECIAL EQUIPMENT Box 23	PRODUCTION NOTES 24	



STORYBOARD

Time	Shots	Location
1:00pm	Setting up of locations, making sure everything is in place and looks the way it must.	Front Room, Bedroom, Bathroom 1 and 2, Kitchen, Corridor
3:30pm	Performers arrive	-
4:00pm	Costume fitting/ hair and makeup application for both male and female performers.	-
5:30pm	Various shots of female getting dressed, extreme close ups applying lipstick, winking at camera etc. Whole shot of face, shoes, looking in mirror.	Bathroom 1
6:00pm	Various shots of male getting ready, extreme close ups of eyes, mouth, face. Applying aftershave, shoes, pouring/ taking a shot.	Bathroom 2
6:30pm	Shots of party	Front Room
7:00pm	Shots of pair together at party dancing etc and then moving out and sequence up the stairs. Suggestive looks between the both of them.	Front Room/ Corridor/ Bedroom
7:30pm	Kissing sequence, eyes open etc. Shots of police siren	Bedroom
8:00pm	Finish for evening	
8:00am	Setting up locations, making sure everything is in place and looks the way it must.	Front Room, Bedroom, Corridor.
9:00am	Morning sequence, staring in bed, extreme close up of female sleeping and crying. Male buttoning shirt up, deleting number from phone etc, following out of door, remnants of last nights party, bottles etc. Male walks away. Close up of male in morning light.	Bedroom, Corridor, Outdoors,
10:00am	Male performing song in extreme close up	-
11:00am	Finish.	

PRE - PRODUCTION

10 SHOT FILM IDEA?

- TALKING WITH YOUR TEAM ABOUT THE IDEA